

# Hyper-Cam Mini



*IR HYPERSPECTRAL  
IMAGING SYSTEM*

## KEY FEATURES



**LOW SWAP, MODULAR DESIGN  
INCLUDING OPTICAL HEAD (OH) AND  
CONTROL AND PROCESSING BOX (CPB)**



**FOURIER-TRANSFORM IMAGING  
SPECTROSCOPY CAPABILITY WITH  
USER-SELECTABLE SPECTRAL  
RESOLUTION UP TO  $4\text{ cm}^{-1}$**



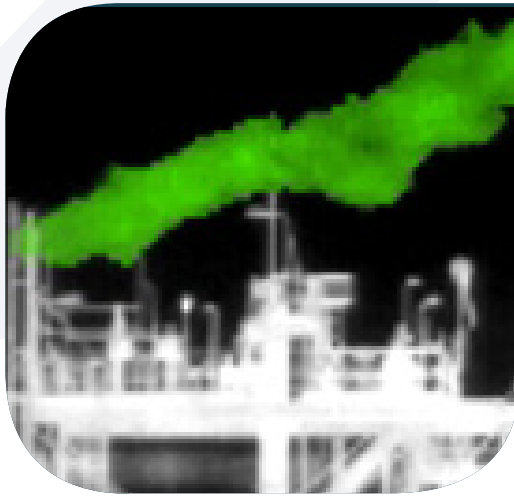
**320 X 256 PIXEL COOLED SLS DETECTOR  
SENSITIVE OVER MWIR (2.9 – 5.2  $\mu\text{m}$ ) OR  
LWIR (7.5–12.4  $\mu\text{m}$ ) SPECTRAL RANGE**



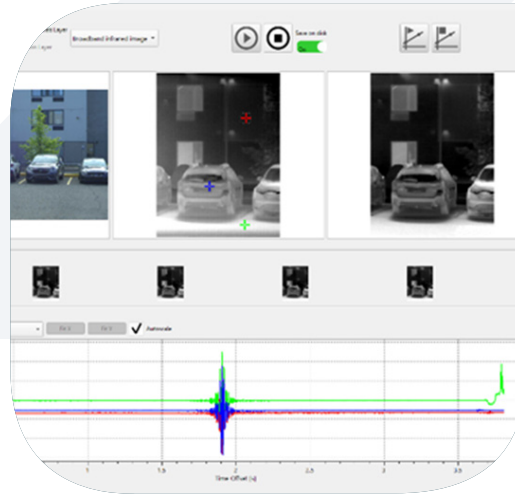
**CALIBRATED SPECTRAL RADIANCE  
DATA PRODUCT**

The Hyper-Cam Mini is an advanced, compact infrared hyperspectral imaging system that combines high spatial, spectral, and temporal resolution capabilities. Sensitive in the MWIR (2.9 – 5.2  $\mu\text{m}$ ) or LWIR (7.5 – 12.4  $\mu\text{m}$ ) spectral range, the Hyper-Cam Mini is well-suited for the analysis of a broad range of gas, mineral, and other target materials. Reduced size, weight, and power specifications ensure that the Hyper-Cam Mini can be deployed into even the most difficult-to-access field locations by a single operator.

# Hyper-Cam Mini



Industrial gas detection & identification



Reveal Pro 6 full-featured scientific software

SPECIFICATIONS	Hyper-Cam Mini MWF	Hyper-Cam Mini xLW
Detector Type	Cooled SLS	Cooled SLS
Detector Format	320 x 256 pixels	320 x 256 pixels
Spectral Range	2.9 – 5.2 $\mu\text{m}$ (1920 - 3450 $\text{cm}^{-1}$ )	7.5 – 12.4 $\mu\text{m}$ (806 - 1333 $\text{cm}^{-1}$ )
Field of View	14° x 11°	14° x 11°
Maximum spectral resolution	4 $\text{cm}^{-1}$	0.5 $\text{cm}^{-1}$
Noise Equivalent Spectral Radiance (typical)	< 10 $\text{nW}/\text{cm}^2.\text{sr}.\text{cm}^{-1}$	< 30 $\text{nW}/\text{cm}^2.\text{sr}.\text{cm}^{-1}$
Radiometric Accuracy	< 2 K	< 3 K
Dimensions	20 x 27 x 21 cm (OH), 21 x 21 x 22 cm (CPB)	20 x 27 x 21 cm (OH), 21 x 21 x 22 cm (CPB)
Weight	< 8.2 kg (OH), < 4.2 kg (CPB)	< 8.2 kg (OH), < 4.2 kg (CPB)
Power Consumption	< 410 W (max), < 270 W (steady-state)	< 410 W (max), < 270 W (steady-state)
Operational Temperature	-10 °C to +50 °C	-10 °C to +50 °C
Storage Temperature	-20 °C to +60 °C	-20 °C to +60 °C

sales@telops.com



telops.com

**EXOSENS**  
REVEAL THE INVISIBLE