



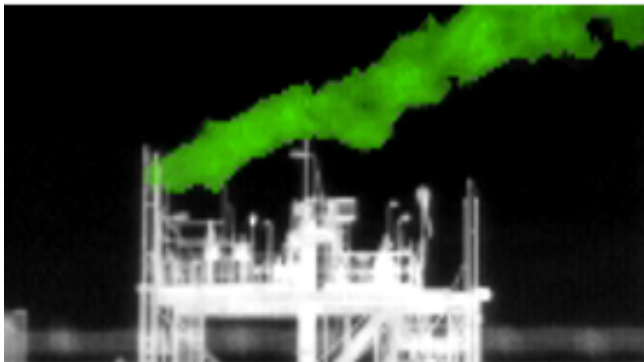
The Hyper-Cam Mini xLW

The Hyper-Cam Mini xLW is an advanced compact infrared hyperspectral imaging system that combines high spatial, spectral and temporal resolution for remote detection, identification and quantification.

With its small Size, Weight and Power (SWaP), the new Hyper-Cam Mini xLW can be utilized in hard-to-reach locations to facilitate high-quality infrared spectral imaging measurements.

The Hyper-Cam Mini xLW is sensitive over an expanded spectral range, allowing for the measurement of gas and mineral targets that were previously out of reach.

KEY FEATURES



Freon 22 detected from a 350-m distance in real time and quantified with the Hyper-Cam. Calculated leak rate was determined to be 10 000 g/h.

- Standoff imaging Fourier-transform spectrometer technology.
- Wide spectral range (7.5 - 12.4 μm).
- User-selectable spectral resolution up to 4 cm^{-1} (137 spectral channels).
- 320 \times 256-pixel Stirling-cooled focal plane array detector.
- Field-of-view (FOV) of 14 \times 11° with sub-windowing permitting to fit the desired FOV.
- Removeable SSD 2 TB Data Recording.
- Integrated GPS.
- Wi-Fi connectivity.

SYSTEM PARTS

The Telops Hyper-Cam xLW includes:

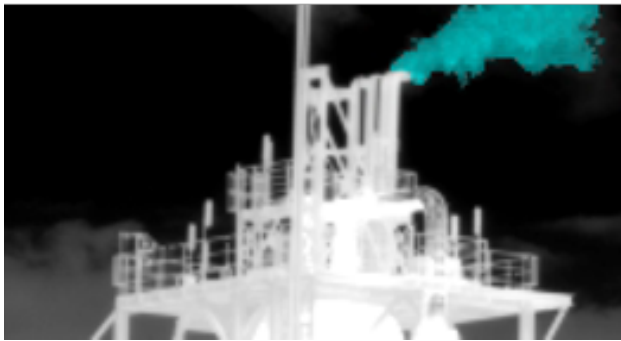
- An optical head.
- A control & processing unit.
- A toughbook computer.
- Integrated calibration sources.
- A 1920 \times 1200 visible color camera for recording and co-visualization of the infrared and visible image.
- The Reveal Software Suite.
- A robust tripod mount.



SPECIFICATIONS

MAIN SPECIFICATIONS

IR CHANNEL IMAGE SIZE	320 x 256 pixels	RADIOMETRIC ACCURACY	< 3 K
IR CHANNEL FIELD OF VIEW	14° x 11°	STEADY-STATE CONSUMPTION	150 W
SPECTRAL RANGE	7.5 - 12.4 μm (806 - 1333 cm^{-1})	MAXIMUM PEAK CONSUMPTION	210 W
MAXIMUM SPECTRAL RESOLUTION	4 cm^{-1}	WEIGHT	OPTICAL HEAD: 8.6 kg CONTROL BOX: 4.2 kg
NOISE EQUIVALENT SPECTRAL RADIANCE (NESR @16 CM^{-1} RES., 25° C AMBIENT, TYPICAL)	< 30 $\text{nW/cm}^2.\text{sr.cm}^{-1}$	SIZE	OPTICAL HEAD: 20 X 27 X 21 cm CONTROL BOX: 21 x 21 x 22 cm



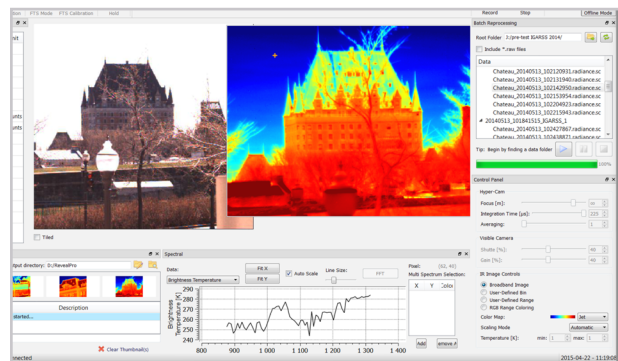
Ethene emissions detected from a 280-m distance in real time and quantified with the Hyper-Cam. Calculated leak rate was determined to be 40 000 g/h.

OPTIONS

Gas Detect & Identify Plug-In

ACQUISITION SOFTWARE

The **Reveal Suite** is designed for users who want to carry out their research with the greatest flexibility, giving access to more advanced parameters related to data acquisition. The complete suite allows the control and acquisition, calibration and viewing of acquired datacubes.



Reveal Pro

Please note that these specifications are subject to change.

FOR MORE INFORMATION | TELOPS.COM

TELOPS HEADQUARTERS
contact@telops.com
Tel.: +1 (418) 864-7808

TELOPS USA
vince.morton@telops.com
Tel.: +1 (831) 419-7507

TELOPS FRANCE
eric.guyot@telops.com
Tel.: +33 1 70 27 71 34

TELOPS CHINA
zhaoyongg@vip.sina.com
Tel.: +86 13801185178